



# Research Brief

\* THE COMMONWEALTH'S OFFICIAL SOURCE OF POPULATION AND ECONOMIC STATISTICS \*

September 21, 2000

## Recreational Licenses and State Park Attendance are Popular in Pennsylvania

MIDDLETOWN, Pa— Outdoor recreation is a popular activity in Pennsylvania. State Park attendance and boat registrations increased by three and one percent, respectively, in 1999.

The Pennsylvania State Data Center at Penn State Harrisburg reports that nine percent of the Commonwealth's population purchased hunting licenses in 1999, according to data from the Pennsylvania Game Commission. The Pennsylvania Fish and Boat Commission data show that eight percent of the population purchased fishing licenses and three percent registered boats.

More than one million (1,050,919) Pennsylvania hunting licenses were sold in 1999, a 4.2 percent decrease from the 1998 figure. Three-fourths of the general licenses were resident adult licenses and another ten percent were resident juniors. Of the total fur taker licenses sold, nearly 92 percent were to resident adults. Fur taker license sales dropped by 32 percent from 1998 to 1999.

The 953,793 fishing licenses sold in 1999 represented a 2.5 percent decrease from 1998. While 88.5 percent of these were resident, 8.6 percent were non-resident and tourist licenses. Trout stamps were added by 73 percent of those who purchased fishing licenses in 1999. Boat registrations increased by 3,427 to 351,779 during the same period.

Pennsylvania's 162 state parks attracted 36.7 million visitors in 1999, over one million more than in the previous year. This is equivalent to every Pennsylvanian visiting a state park more than three times in the year. The five most visited parks, Presque Isle, Pymatuning, Ohiopyle, Point, and Prince Gallitzen, accounted for 18 percent of all visits. The top ten accounted for 25 percent.

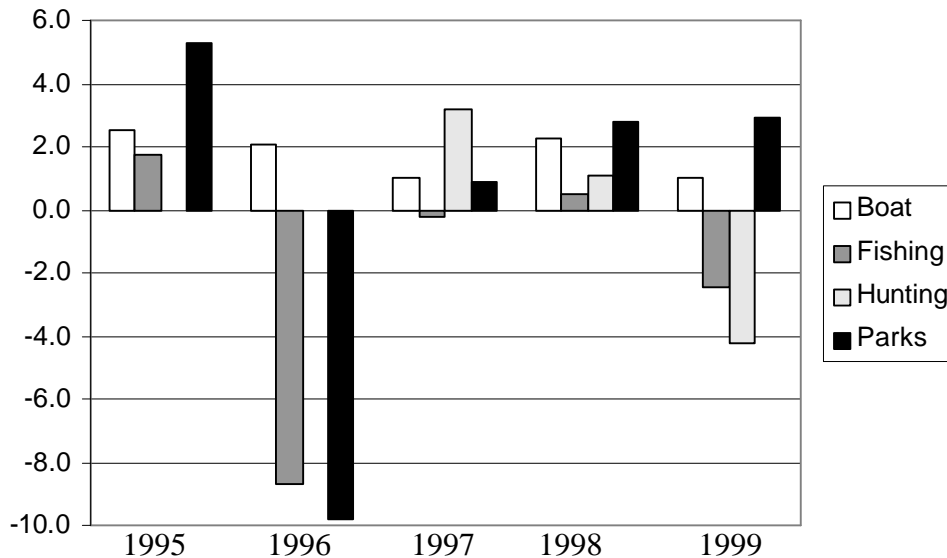
Allegheny County saw the greatest number of fishing licenses sold, nearly 70,000. York and Westmoreland counties followed each with more than 37,000. Montour County had the fewest with less



than 1,000 but showed the greatest percent increase from 1998 at 51.6 percent. Clarion County was second with a 10 percent gain and Perry showed the greatest drop (-20.2 percent). In Forest County, 52.8 percent of the population bought fishing licenses compared to the next highest, 32.9 percent in Wayne County. The low of 1.7 percent was in Philadelphia County.

Allegheny County also saw the highest boat registrations with more than 29,000. Bucks had approximately 16,500 while Cameron had only 249. The greatest increases were in Fayette (11.5 percent), Forest (10.1), and Chester (9.2) counties while the largest drop was again in Philadelphia at -2.9 percent. Wayne and Forest counties saw boat registrations of more than ten percent of their respective populations.

**Percent Change in Number of Boat Registrations, Fishing and Hunting Licenses, and State Park Attendees: Pennsylvania 1995-1999**



The Pennsylvania State Data Center is the Commonwealth’s official source of population and economic statistics and services. It is based at Penn State Harrisburg’s Institute of State and Regional Affairs. The Pennsylvania State Data Center is part of the U.S. Census Bureau’s national State Data Center Program.

Editors: For additional data, contact Amy Jonas at the Data Center’s State Capital Office, (717) 772-2710, or for faculty comment on this topic contact Penn State Harrisburg’s Public Information Office, (717) 948-6029.

Source of Information: U.S. Census Bureau  
 Pennsylvania Game Commission  
 Pennsylvania Fish and Boat Commission  
 Pennsylvania Department of Conservation and Natural Resources

Accompanying Table: Fishing Licenses, Boat Registrations, and State Park Attendance by PA County

**Fishing Licenses, Boat Registrations, and State Park Attendance by Pennsylvania County**

<u>County</u>	<u>Fishing Licenses</u>			<u>Boat Registrations</u>			<u>State Park Attendance</u>		
	<u>1998</u>	<u>1999</u>	<u>% change</u>	<u>*1997</u>	<u>1999</u>	<u>% change</u>	<u>1998</u>	<u>1999</u>	<u>% Change</u>
Adams	4,602	4,303	-6.5	2,524	2,751	9.0			
Allegheny	69,272	67,849	-2.1	29,485	29,194	-1.0	1,525,195	1,842,575	20.8
Armstrong	9,356	9,132	-2.4	3,418	3,706	8.4			
Beaver	14,610	14,864	1.7	6,384	6,550	2.6	465,562	464,973	-0.1
Bedford	9,081	9,083	0.0	1,683	1,826	8.5	884,918	922,699	4.3
Berks	30,045	28,090	-6.5	8,602	8,820	2.5	630,313	643,946	2.2
Blair	17,758	16,722	-5.8	5,043	5,126	1.6	157,465	190,867	21.2
Bradford	8,246	7,908	-4.1	2,876	2,950	2.6	84,491	87,126	3.1
Bucks	33,995	32,830	-3.4	16,000	16,473	3.0	2,699,500	3,312,071	22.7
Butler	22,654	22,743	0.4	8,386	8,766	4.5	1,324,365	1,322,414	-0.1
Cambria	19,819	20,143	1.6	5,128	5,120	-0.2	1,489,113	1,539,165	3.4
Cameron	1,370	1,336	-2.5	242	249	2.9	113,232	57,064	-49.6
Carbon	7,058	6,846	-3.0	2,770	2,847	2.8	905,564	1,327,317	46.6
Centre	14,275	14,060	-1.5	3,529	3,680	4.3	893,038	815,555	-8.7
Chester	21,668	21,360	-1.4	6,719	7,338	9.2	506,023	762,406	50.7
Clarion	7,403	7,960	7.5	2,007	2,026	0.9	473,914	617,516	30.3
Clearfield	14,070	14,124	0.4	2,763	2,852	3.2	184,270	178,083	-3.4
Clinton	6,161	6,769	9.9	1,771	1,899	7.2	291,844	294,735	1.0
Columbia	9,305	8,744	-6.0	2,997	3,025	0.9			
Crawford	18,892	18,536	-1.9	6,060	6,335	4.5	3,152,246	3,270,528	3.8
Cumberland	22,863	23,608	3.3	7,284	7,667	5.3	531,998	478,056	-10.1
Dauphin	22,400	22,155	-1.1	8,959	9,081	1.4			
Delaware	14,218	13,511	-5.0	5,495	5,653	2.9	792,335	806,733	1.8
Elk	6,701	6,516	-2.8	983	984	0.1	136,993	143,964	5.1
Erie	31,519	32,086	1.8	10,765	11,382	5.7	4,247,846	4,095,792	-3.6
Fayette	16,442	16,664	1.4	3,991	4,450	11.5	2,028,579	2,026,599	-0.1
Forest	2,867	2,605	-9.1	457	503	10.1			
Franklin	13,159	12,666	-3.7	3,383	3,584	5.9	336,302	345,348	2.7
Fulton	1,523	1,358	-10.8	554	581	4.9	564,730	552,465	-2.2
Greene	4,092	3,938	-3.8	977	1,049	7.4	155,946	130,241	-16.5
Huntingdon	8,691	8,879	2.2	2,318	2,330	0.5	526,686	517,117	-1.8
Indiana	9,942	10,224	2.8	2,425	2,601	7.3	216,829	198,922	-8.3
Jefferson	5,585	5,278	-5.5	1,571	1,599	1.8	179,714	196,860	9.5
Juniata	1,737	1,734	-0.2	1,115	1,198	7.4			
Lackawanna	18,337	17,448	-4.8	7,828	7,726	-1.3	382,744	324,267	-15.3
Lancaster	35,093	34,213	-2.5	11,622	12,336	6.1	86,451	96,947	12.1

**Fishing Licenses, Boat Registrations, and State Park Attendance by Pennsylvania County**

County	Fishing Licenses			Boat Registrations			State Park Attendance		
	1998	1999	% change	*1997	1999	% change	1998	1999	% change
Lawrence	9,064	8,697	-4.0	3,737	3,866	3.5	191,153	169,369	-11.4
Lebanon	9,560	9,226	-3.5	3,589	3,687	2.7	374,286	259,379	-30.7
Lehigh	22,011	21,518	-2.2	8,623	9,279	7.6			
Luzerne	29,194	28,313	-3.0	12,729	12,878	1.2	721,403	673,689	-6.6
Lycoming	15,952	15,280	-4.2	5,883	6,114	3.9	141,514	119,239	-15.7
Mckean	7,475	6,986	-6.5	1,884	1,967	4.4	214,897	163,587	-23.9
Mercer	17,450	17,670	1.3	5,785	6,026	4.2	692,767	333,142	-51.9
Mifflin	8,103	8,415	3.9	2,178	2,254	3.5	113,350	98,094	-13.5
Monroe	19,910	18,776	-5.7	4,926	5,235	6.3	300,435	434,550	44.6
Montgomery	31,041	29,296	-5.6	11,645	12,097	3.9	635,130	594,672	-6.4
Montour	634	961	51.6	797	785	-1.5			
Northampton	19,823	18,935	-4.5	8,289	8,160	-1.6	208,711	202,392	-3.0
Northumberland	8,317	7,720	-7.2	3,189	3,194	0.2	357,544	166,898	-53.3
Perry	5,841	4,660	-20.2	2,803	2,920	4.2	292,766	389,555	33.1
Philadelphia	25,504	24,510	-3.9	6,136	5,961	-2.9			
Pike	12,878	12,211	-5.2	3,528	3,669	4.0	357,349	361,656	1.2
Potter	3,913	3,660	-6.5	732	757	3.4	269,008	321,709	19.6
Schuylkill	9,891	10,003	1.1	4,785	4,792	0.1	430,338	470,542	9.3
Snyder	7,453	7,504	0.7	1,808	1,819	0.6			
Somerset	10,057	10,319	2.6	2,846	3,007	5.7	415,289	404,239	-2.7
Sullivan	1,684	1,557	-7.5	316	335	6.0	175,307	201,877	15.2
Susquehanna	7,619	6,664	-12.5	2,009	2,108	4.9	32,100	36,240	12.9
Tioga	8,319	8,182	-1.6	1,706	1,809	6.0	340,346	410,586	20.6
Union	5,367	5,464	1.8	1,404	1,411	0.5	201,604	191,881	-4.8
Venango	9,270	8,340	-10.0	3,717	3,932	5.8	169,379	164,063	-3.1
Warren	6,464	6,474	0.2	2,206	2,383	8.0	219,134	148,080	-32.4
Washington	14,020	14,255	1.7	6,579	6,805	3.4			
Wayne	14,906	15,169	1.8	4,477	4,856	8.5			
Westmoreland	37,374	34,952	-6.5	11,230	11,415	1.6	742,665	702,043	-5.5
Wyoming	4,752	4,578	-3.7	1,982	2,022	2.0			
York	37,438	35,037	-6.4	12,736	13,181	3.5	2,017,919	1,978,136	-2.0
out of state	2,069	2,176	5.2	8,269	8,798	6.4			62.6
multi-County							95,224	154,831	
TOTAL	978,162	953,793	-2.5	340,637	351,779	3.3	35,677,824	36,712,800	2.9

\*Due to the implementation of new registration software in 1998, county figures were not generated for Boat Registrations.