



Research Brief

The Commonwealth's Official Source for Population and Economic Statistics

April 16, 2003

Report Released on Pennsylvania's Brain Drain

MIDDLETOWN, Pa – The Pennsylvania State Data Center at Penn State Harrisburg has published a new report by Gordon F. De Jong and Michele Steinmetz of the Population Research Institute at The Pennsylvania State University. Trend data for 1995-2001 was provided by The Pennsylvania State Data Center. The report, titled *Pennsylvania's Brain Drain Migration and Labor Force Education Gap, 2000*, bases its findings on data from the U.S. Census Bureau's Current Population Survey.

“Brain drain migration is the loss of highly educated and skilled occupational workers, notably young people, through the exchange of migrants with other states. This report documents the migration flow of one of Pennsylvania's most valuable resources – its best and brightest workers – during the 1995-2001 period.”

The report covers three main topics. The first topic documents the migration flow of Pennsylvanians by age. The second topic examines how the educational attainment of Pennsylvania's labor force compares with the six states surrounding Pennsylvania (Delaware, Maryland, New Jersey, New York, Ohio and West Virginia). The third topic examines the impact of educational attainment on unemployment in Pennsylvania and the impact of educational attainment on Pennsylvania workers below the poverty level.

Relevant findings of the report include:

- From 1991 to 2001, Pennsylvania had an estimated net migration loss of 29,368 young adults ages 20 to 29.
- From 1991 to 2001, Pennsylvania had an estimated net migration loss of 20,038 people with college and graduate or professional degrees, and 65.2 percent of this loss was in the 20-to 29-year-old age group.
- From 1999 to 2001, 22.5 percent of Pennsylvania's official labor force ages 18 to 64 had completed a bachelor's degree.

- From 1999 to 2001, the unemployment rate in Pennsylvania was 11.2 percent for high school dropouts, 5.5 percent for high school diploma only workers and 2.6 percent for college graduates.
- From 1999 to 2001, the poverty rate for Pennsylvania workers was 26.3 percent for high school dropouts, 11.0 percent for high school diploma only workers and 3.1 percent for college graduates.

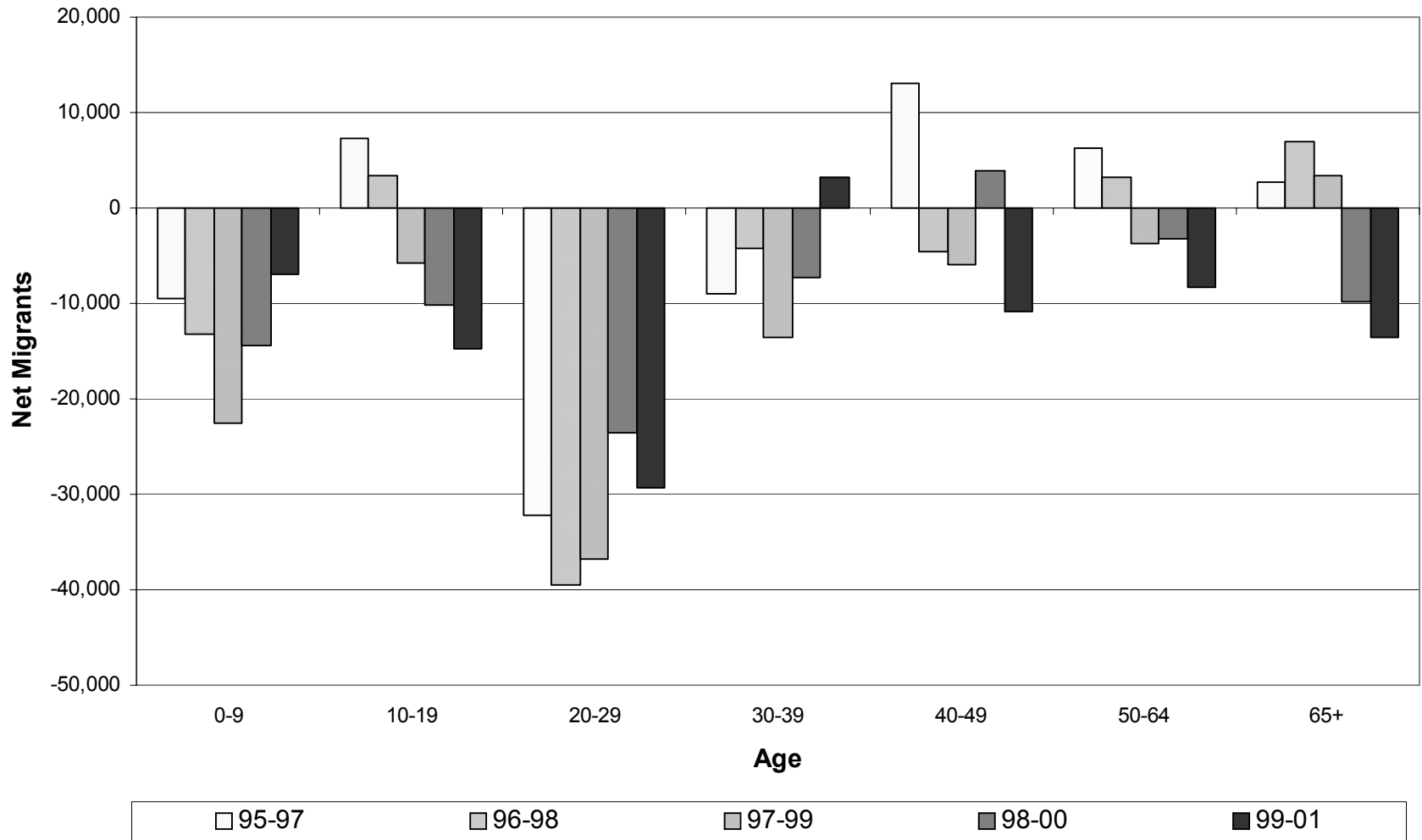
For ordering information, please contact the Pennsylvania State Data at 717.948.6336 or visit our website at Pasdc.hbg.psu.edu. Legislative offices may contact the Pennsylvania State Data Center's State Capital Office at 717.772.2710.

For additional information, please contact the Pennsylvania State Data Center's State Capital Office at 717.772.2710.

The Pennsylvania State Data Center is the commonwealth's official source of population and economic statistics. It is based at Penn State Harrisburg's Institute of State and Regional Affairs. The Pennsylvania State Data Center is part of the U.S. Census Bureau's National State Data Center Program.

Editors: For additional data, contact the Pennsylvania State Data Center's State Capital Office at 717.772.2710 or for faculty comment on this topic, contact Penn State Harrisburg's Public Information Office at 717.948.6029.

Net Migrants by Age: Pennsylvania 1995-2001



Source: U.S. Bureau of the Census, Current Population Survey, 1995-2001
 Prepared By: Pennsylvania State Data Center